

# MADE IN HEAVEN

Words and Music by  
Freddie Mercury

♩ = 84  
N.C.

G4m E/G#2 G4m E/G#2

G4m E/G#2 G4m E F# B

I'm tak-ing my ride with des-ti-ny,  
hav-ing to learn to pay the price, they're

D4m G4m B7 E C4m

will-ing to play my part,  
turn-ing me up-side down,

liv-ing with pain-ful me-mo-ries,  
wait-ing for pos-si-bi-li-ties, don't

lov-ing with all my heart. Made in  
see too ma-ny a-round. Made in

**D** **A** **F#m** **B**

hea - ven, made in hea - ven, it was all meant to —  
 hea - ven, made in hea - ven, it's for all meant to

**E** **D** **B9** **A** **A/G#**

be, yeah, made in hea - ven, made in hea - ven, ——— that's what they say, can't you  
 see, made in hea - ven, made in hea - ven, ——— that's what ev - ery - bo - dy says, ev - ery - bo - dy

**F#m7** **Bm** **Bm(maj7)** **Ddim**

see, that's what ev - ery - bo - dy says to me, can't you see, — oh ———  
 says to me, it was real - ly meant to be, oh can't you see, yeah,

**A** **A/G#** **F#m7** **Bm7**

I know, I know, I know that it's true, yes it's real - ly meant to be, ———  
 ev - ery - bo - dy, ev - ery - bo - dy says, yes ——— it was meant to be, ———

1. Dm7/F

A

G#m

E/G#

G#m

E/G#

— deep in my heart. —

G#m

E/G#

G#m

E

F#

2. Fdim7

E7

A

I'm — yeah, yeah. — When stor-my

D

Bm7

A

wea - ther comes around, it was made in hea - ven, when sun - ny skies

D

B7/D#

A

A/G#

— break through be - hind the clouds, I wish it could last for - ev - er, — yeah, —

**F#m** **B** **B7/D#** **D#dim7**

yeah, — wish it could last for - ev - er, — for - ev - er.

Detailed description: This system contains the first two measures of the piece. The guitar part (top staff) features chords F#m, B, B7/D#, and D#dim7 with corresponding fretboard diagrams. The piano accompaniment (middle and bottom staves) includes a vocal line with lyrics and piano accompaniment with triplets. The key signature has three sharps (F#, C#, G#) and the time signature is 4/4.

**F** **C** **Am** **D** **G** **F**

Detailed description: This system contains the next two measures. The guitar part (top staff) features chords F, C, Am, D, G, and F with corresponding fretboard diagrams. The piano accompaniment (middle and bottom staves) includes piano accompaniment with triplets. The key signature and time signature remain the same.

**D7** **C** **G** **D** **Asus4** **A** **F#7/A#**

I'm

Detailed description: This system contains the next two measures. The guitar part (top staff) features chords D7, C, G, D, Asus4, A, and F#7/A# with corresponding fretboard diagrams. The piano accompaniment (middle and bottom staves) includes piano accompaniment with triplets. The key signature and time signature remain the same.

**B** **D#m** **G#m** **B7**

play-ing my role in his - to-ry, look-ing to find my goal, tak-ing in all this mi-se-ry, but

Detailed description: This system contains the final two measures. The guitar part (top staff) features chords B, D#m, G#m, and B7 with corresponding fretboard diagrams. The piano accompaniment (middle and bottom staves) includes piano accompaniment with triplets. The key signature and time signature remain the same.

E C#m D A F#m B

giving it all my soul. Made in heaven, made in heaven, it was all meant to...

E D B9 A A/G#

be, made in heaven, made in heaven, \_\_\_\_\_ that's what every-body says, wait and

F#m7 Bm Bm(maj7) Ddim A A/G#

see, it was really meant to be, \_\_\_\_\_ so plain to see, \_\_\_\_\_ yeah, \_\_\_\_\_ every-body, every-body, ev-

F#m7 B9 Bm/D Dm7/F E7

- every-body tells me so, \_\_\_\_\_ yes \_\_\_\_\_ it was plain to see, \_\_\_\_\_ yes it was meant to be \_\_\_\_\_ written in the

Am F Am/E Am F Am F Am/E

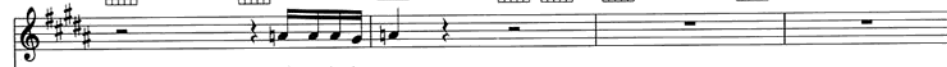


stars,

writ-ten in the stars,



Am F Am F Am/E Am F



writ-ten in the stars.

