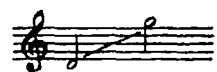


# ВОСТОЧНАЯ ПЕСНЯ



Слова С. ГОРОДЕЦКОГО

Moderato

Как гро\_за с ог\_нем и гро\_мом на са\_

*mf* *p*

-ды цве\_ту\_щих роз на\_ле\_та\_ет бла\_го\_

*p*

-дат\_но, на са\_ды цве\_ту\_щих роз,

*p* *p* *p*

Vivo, ma non troppo e poi accelerando

так лю\_бовь в мла\_до\_е серд\_це мчит\_ся с пла\_ме\_

*p* *cresc.* *rosso a rosso*

-нем и гро- мом, как в са- ды цве- ту- щих роз.

This system contains a vocal line and piano accompaniment. The vocal line is in a treble clef with a key signature of two flats and a common time signature. The lyrics are: "-нем и гро- мом, как в са- ды цве- ту- щих роз." The piano accompaniment consists of two staves (treble and bass clefs) with chords and moving lines.

A... И-

*p* *sf*

This system continues the vocal and piano parts. The vocal line has a long note followed by "И-". The piano accompaniment features a rhythmic pattern in the bass line and chords in the treble line.

Vivo assai, quasi Presto

a! A...

*mf* *ff* *p*

This system is marked "Vivo assai, quasi Presto". The vocal line begins with "a!". The piano accompaniment is more active, with a strong bass line and chords. Dynamics include *mf*, *ff*, and *p*.

И- а! И- а!

*ff* *ff*

This system concludes the piece with the vocal line repeating "И- а!". The piano accompaniment features a powerful, rhythmic accompaniment with *ff* dynamics.